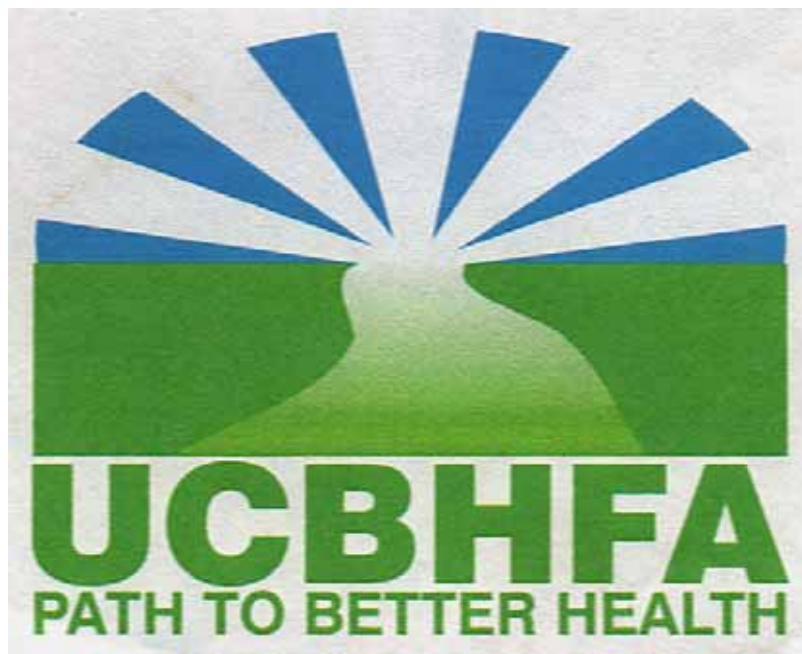


ORGANISATION PROFILE:

THE UGANDA COMMUNITY BASED HEALTH FINANCING ASSOCIATION (UCBHFA)



**UCBHFA Secretariat
Mbubi Zone, Rubaga
Plot 245, Block 1- Natete Wakaliga Rd
P.O Box 830 Kampala
Tel: +256 312 262 013
Fax: +256 312 262 013
E.Mail: ucbhfa@africaonline.co.ug**

1.0 GENERAL INFO:

Network registered name: ___Uganda Community Based Health Financing Association (UCBHFA)

Legal Status: ___NGO

Year of Establishment: ___ _1998

Year of Registration ___1999

2.0 PURPOSE OF ESTABLISHMENT:

___ to enable Community Based Health-Financing Schemes share experiences and improve their insurance-based skills through capacity building and supervision of the scheme performances - Coordination and promotion of CHF activities in Uganda

2.1 VISION: Equitable access to quality healthcare for all Ugandans

2.2 MISSION: To promote and support Community Health Financing (CHF) Initiatives to become more sustainable in order to enhance access to quality healthcare

2.3 VALUES: Efficiency, Partnerships, Integrity and, Continuous Learning

2.4 SPECIFIC OBJECTIVES:

1. To coordinate all Community Health-Financing initiatives in Uganda in a professional way.
2. To act as a legal, non-profit making entity dedicated to promoting Community Based Health Financing (CBHF) for the people of Uganda
3. To liaise with the Ministry of Health and all Development Partners on behalf of the participating health schemes.
4. To conduct appropriate research on Community Health Financing.
5. To provide technical and managerial support to enhance the skills of individual scheme staff to improve the implementation of Community Health-Financing.

2.5 MAJOR ACTIVITIES OF THE ASSOCIATION

1. Coordinating activities of CHF initiatives in Uganda
2. Providing technical support and building capacity of member organization in CHF
3. Liaising with the Ministry of Health and all Development Partners in the field of health on behalf of the participating CHFs

4. Enlightening and educating the masses on the advantages of CHFs as a way of minimizing major financial hardships caused by unexpected health catastrophes.

3.0 MEMBERSHIP:

Has 25 Members:

- 1) Ishaka Adventists Hospital;
- 2) st. Kaloli Lwanga Nyakibale Hospital;
- 3) St Francis Mutolere Hospital;
- 4) Bushenyi Medical Center (BMC);
- 5) Health Partners/ Uganda Health Cooperative;
- 6) St Joseph Hospital Kitovu;
- 7) Save for Health – Uganda (SHU);
- 8) Comboni Hospital Kyamuhunga;
- 9) Mother Child Rescue Health Plan;
- 10) Integrated Community Based Initiatives (ICOBI);
- 11) Nyamwegabira Health Plan;
- 12) Kitanga Health Plan;
- 13) Kisiizi Hospital;
- 14) St. Francis Hospital Nsambya;
- 15) International Labor Organization (ILO);
- 16) Kagando Hospital;
- 17) Finca Uganda;
- 18) kiwoko Hospital;
- 19) Mitooma health center;
- 20) Nyakatsiro Health Center
- 21) Micro care LTD.
- 22) Nyamwegabira CHIS
- 23) Kinanira CHIS
- 24) Ishaka Health Plan
- 25) Kibirizi CHIS

4 STRATEGIC PARTNERSHIPS (KEY PARTNERS AND TYPES OF PARTNERSHIPS)

Partner	Type
MOH	Technical and policy direction
CHeFA - EA	Technical and financial
Kabale catholic diocese	Promoter
Uganda Medical Bureaus	Service provider owners/ Promoters
Member Hospitals	Service providers/ promoters
Cordaid	Financial/Promoter

5 STAFFING

Number and designations of people employed by the secretariat (4)

1. National Coordinator
2. janitor
3. driver
4. finance and administrative officer

6 FUNDING:

Sources of funds for the Association

1. Cordaid
2. Membership and subscription fees
3. CHEFA-EA

7 SCHEME COVERAGE:

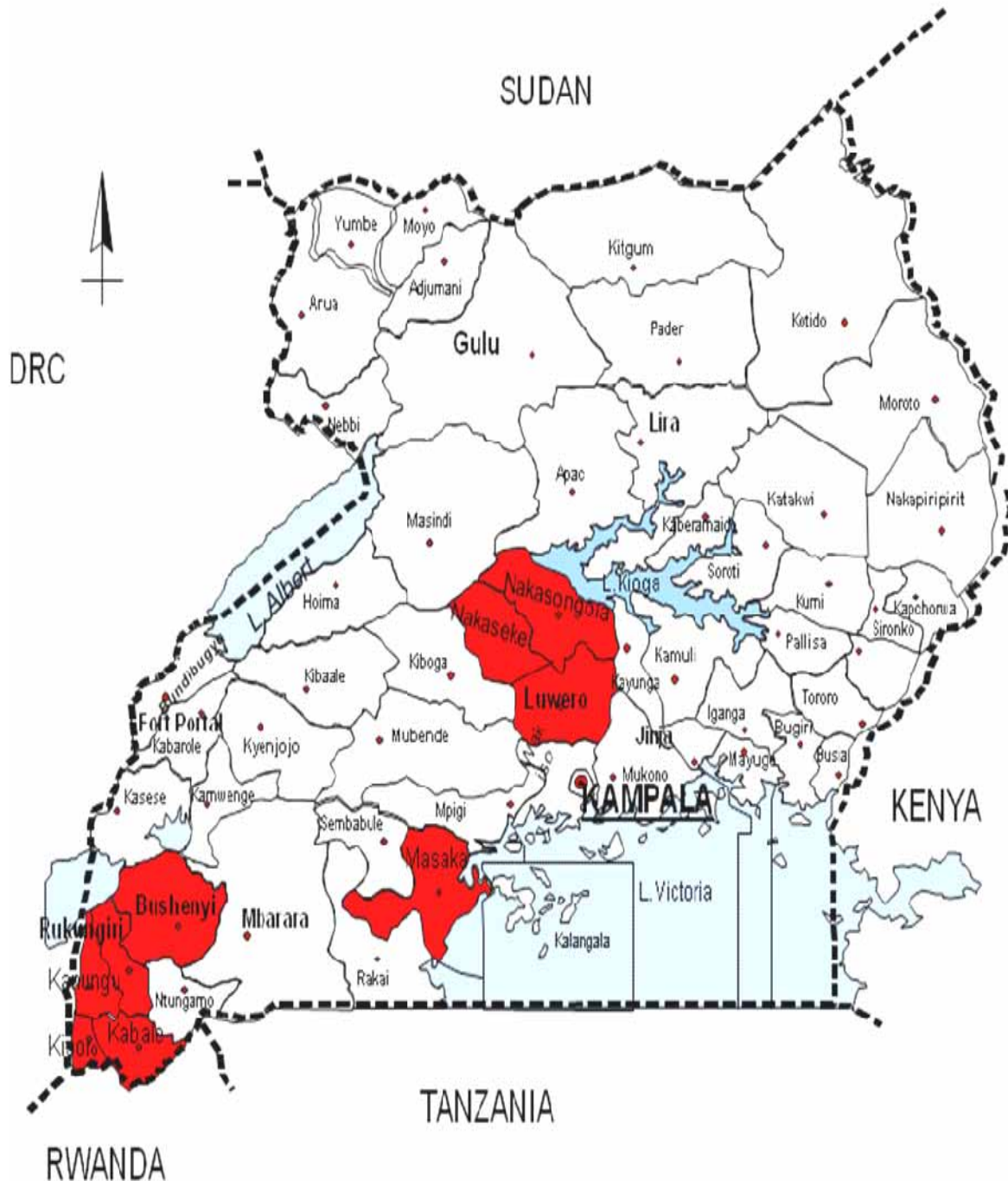
7.1 Details of CHIS schemes

Ser	Name of scheme	Type of scheme			Year of Establishm ent	Location	
		Commu nity Based	Facility Based	Other		District	Region (e.g. West, East, South, Central, North)
1)	Kisiizi Health Plan		Yes		1996		West

2)	Mother Child Rescue Health Plan	Yes			1999	Bushen yi	West
3)	Ishaka Hospital Health Plan		Yes		1999	Bushen yi	West
4)	BMC - School Health Made Easy Scheme		Yes		1998	Bushen yi	West
5)	Kitovu Hospital Health Plan		Yes		1999	Masaka	Central
6)	Nyakibale Hospital Health Plan		Yes		1999	Rukungi ri	West
7)	Comboni Hospital Health Plan		Yes		2002	Bushen yi	West
8)	Mutolere Hospital Health Plan		Yes		1998	Kisoro	West
9)	Nyamwegabira Health Plan		Yes		2004	Kanung u	West
10)	Kitanga Health Plan	Yes			2004	Kabale	West
11)	Save for Health Uganda-LUWERO			Saving and Credit	1999	Luwero	Central
12)	Nyakatsiro Health Plan		Yes		2006	Bushen yi	West
13)	Mitooma Nursing Home Health Plan		Yes		2006	Bushen yi	West
14)	Ishaka health plan	Yes				Bushen yi	West
15)	MCRP & UHC	Yes				Bushen yi	West
16)	Kitovu hospital (Sembabule)		Yes			Semabu le	central
17)	Kitanga health plan		Yes			Kabale	West
18)	SHU-Bushenyi	Yes				Bushen yi	West
19)	Nyamwegabira	Yes				Kanung u	West
20)	Kinanira plan & Mutolele hospital		Yes			Kisoro	West

21)	Kibirizi plan & Nyakibare hospital	Yes				Rukunigiri	West
22)	ICOB					Bushenyi	West

7.2 MAP OF UGANDA INDICATING THE DISTRIBUTION OF MEMBER SCHEMES

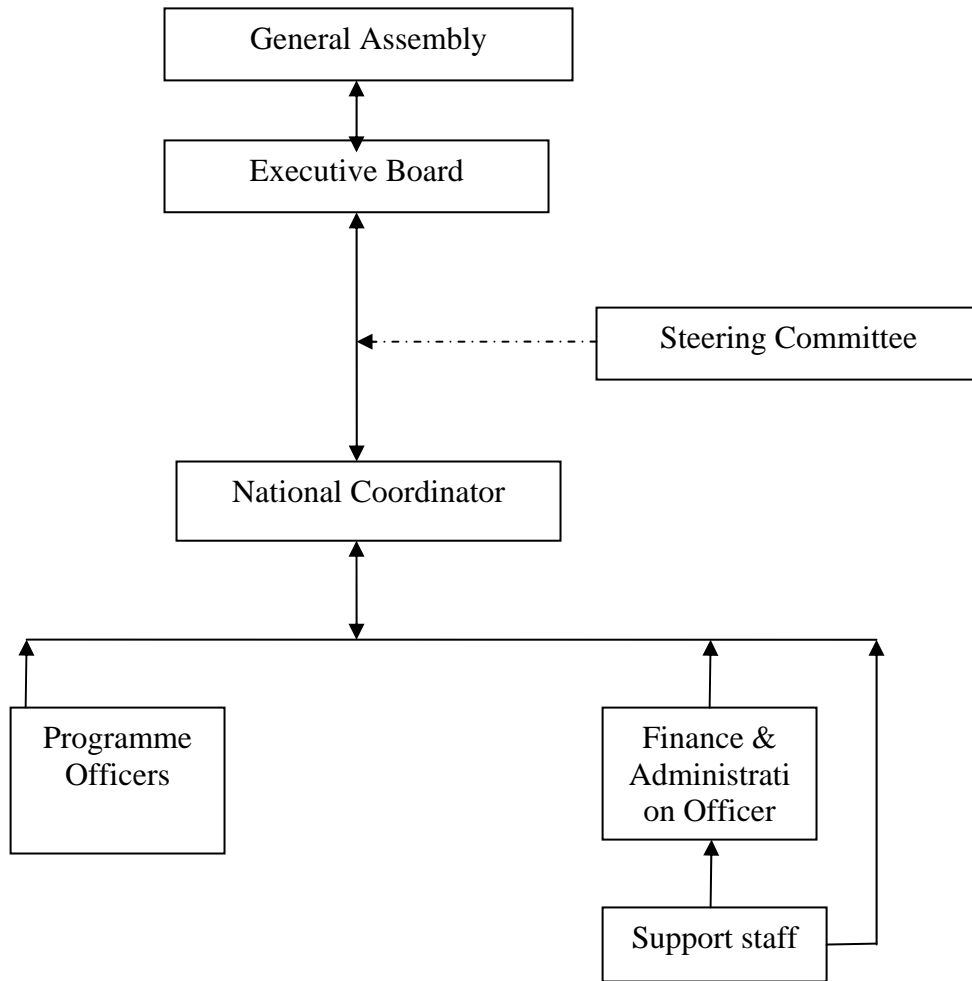


8 GOVERNANCE STRUCTURE

8.1 Photograph of the board:



8.2 UCBHFA Organogram:



9 ACHIEVEMENTS:

Major achievements of your network include::

1. Enrollment of new members to the Association
2. Exchange visits both internally and externally
3. CHF recognized as a pillar in the design and development of National Health Insurance in Uganda; UCBHFA adopted on the National Task Force
4. Getting EED and Cordaid as Development Partners in the field of CHF
5. Improvement and Strengthening of CHF coordination and Data collection
6. Improved working relations with all CHF stakeholders and local government in Uganda
7. initiated, started and sustained CHF schemes amidst Government's free health services

8. UCBHFA and its member organizations used as a source of information on CHF development for researchers and promoters

10 CHALLENGES:

1. Inadequate technical skills in the CHF field by the managers
2. Inadequate resource to implement the CHF activities

11 LOCATION AND CONTACTS OF OFFICES



1 Office premises in Kampala

CONTACT INFORMATION

Official Contact Person: _____National Coordinator
Office physical Address: _____Plot 245 block 1 Natete Wakaliga Road
P.O.Box: _____830 Kampala - Uganda
Tel: _____+256 312 262 013 / 712 629131 / 0702 672 355
Fax: _____+256 312 262 013
Emails: _____
_____ucbhfa@africaonline.co.ug/prona2@hotmail.com

Website link: _____ www.ucbhfa.org